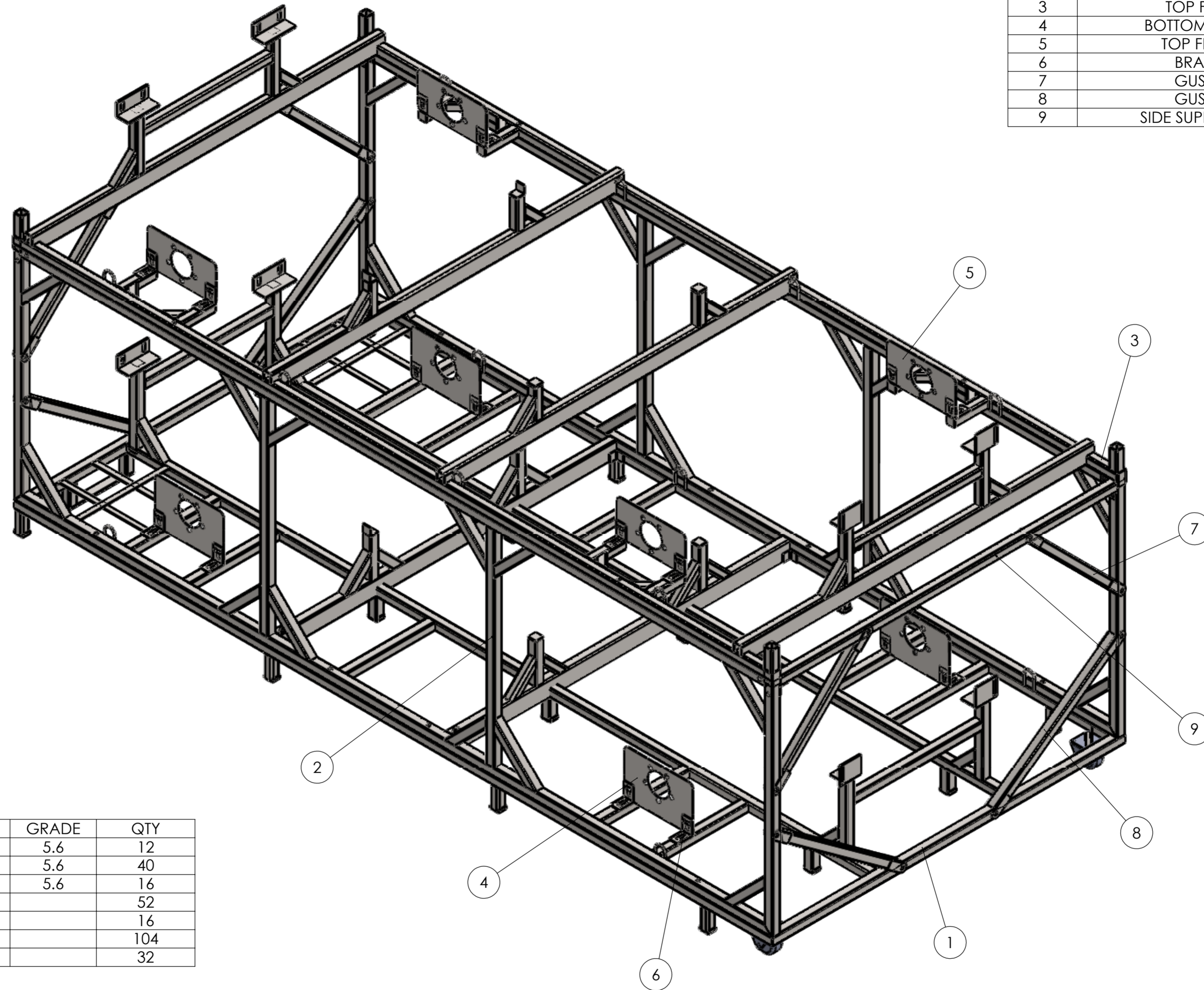


COLLAPSIBLE ROXOR FRAME ASSY.

S.NO.	DESCRIPTION	SIZE(MM)	QTY
1	BASE FRAME	3870X1800X575	1
2	SIDE FRAME LEFT & RIGHT	3870X1130X40	2
3	TOP FRAME	3870X1800X415	1
4	BOTTOM FLANGE	350X230X2	4
5	TOP FLANGE	350X180X2	4
6	BRACKET	75X75X3	16
7	GUSSET 1	700X40X40	4
8	GUSSET 2	830X40X40	4
9	SIDE SUPPORT BAR	1720X40X40	2

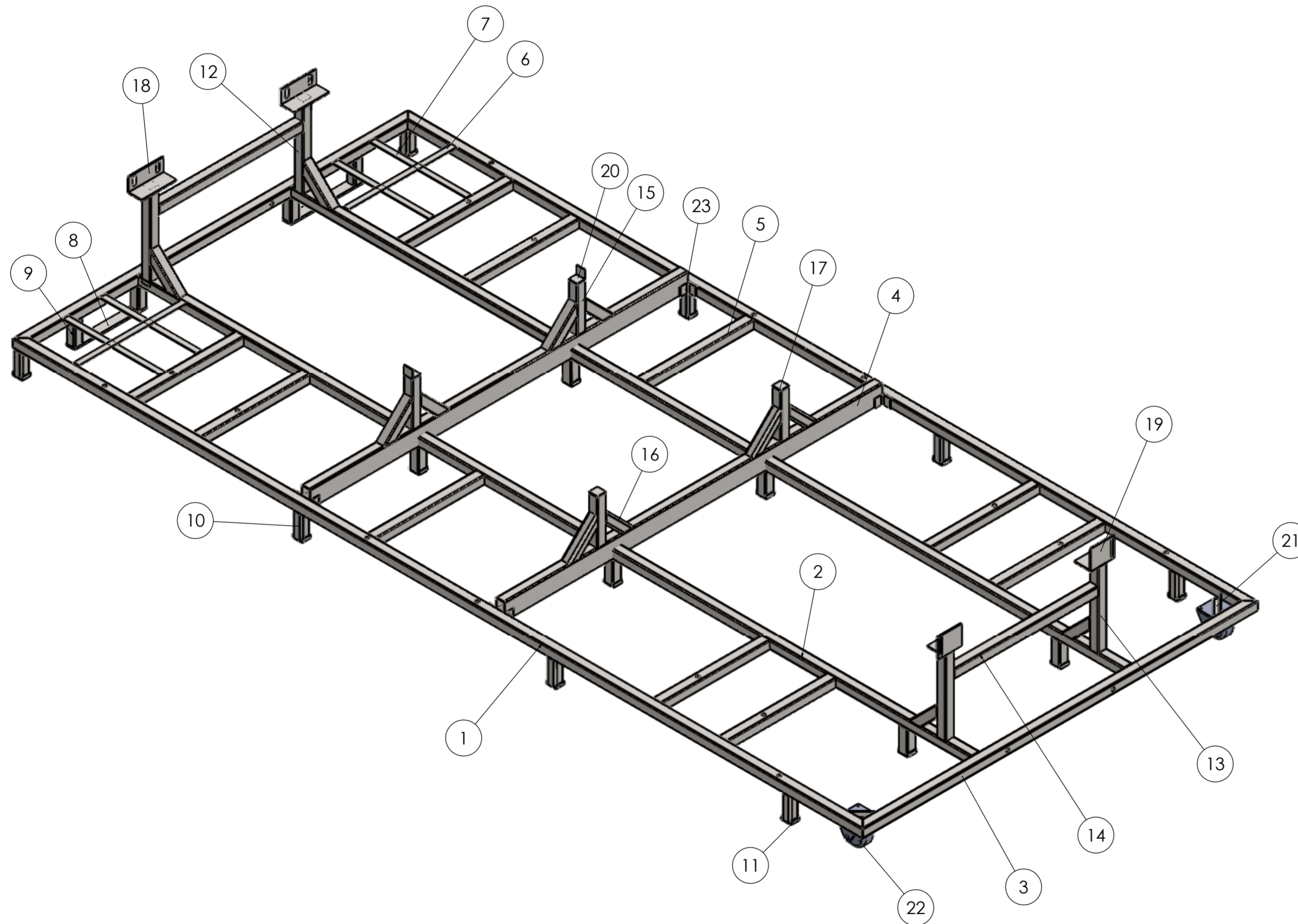


DESCRIPTION (H/W)	TYPE	GRADE	QTY
BOLT M10X4"		5.6	12
BOLT M10X2.5"		5.6	40
BOLT M8X1"		5.6	16
NUT M10	NYLOCK		52
NUT M8	NYLOCK		16
WASHER ID-10	PLAIN		104
WASHER ID-8	PLAIN		32

NOTE:
 1.OPEN ENDS OF SQ.TUBE/ROUND TUBE TO BE PLUGGED, CHAMFERED.
 2.ENSURE FULL WELDING,WELDING SHOULD BE FREE FROM BLOW HOLES,WELDING SPATTERS ETC.
 3.ALL SHARP CORNERS,WELDING JOINTS TO BE DEBURRED.
 4.RAW METRIAL SHOULD BE OF UNIFORM THICKNESS & FINISH WITHOUT DENT MARKS.

Material:		This drawing and any information or descriptive material set out on it are the confidential and copyright property of HLPL . © and MUST NOT BE DISCLOSED, COPIED, LOANED in whole or part or used for any purpose without the written permission of HLPL .		Description: COLLAPSIBLE ROXOR FRAME ASSY.	
Finish:		Unless Otherwise Stated: Linear Tol.: ±0.2, Angular Tol.: 0°15' Surface Finish: 0.8µm All Dimensions: mm		Drawn by: SHIVAM	
Drawing Scale: 1:20		Company Confidential		Checked/Approved by:	
Approx Weight: Kg		Legal Owner:		Part Name:	
PROJECTION TYPE: <input type="checkbox"/> FIRST ANGLE <input checked="" type="checkbox"/> THIRD ANGLE		Sheet Size: A2		Part No:	
		holisol Supply Chain Management		Client Name:	
				Sheet: 1 of 12	
				Revision:	
				OEM Name: M&M	

BASE FRAME.



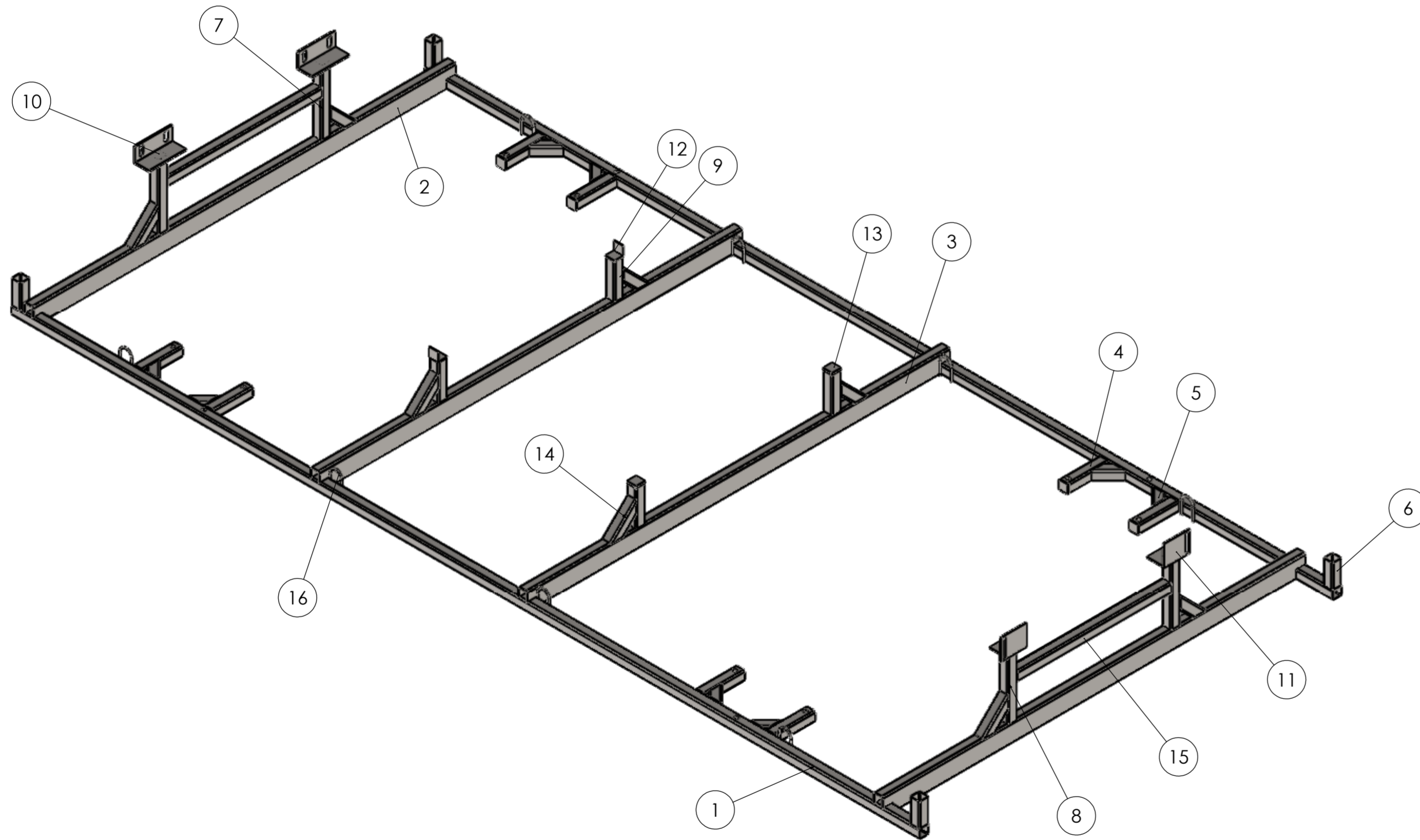
S.NO.	DESCRIPTION	SIZE(MM)	QTY
1	SQ.TUBE 40X40X2	3870	2
2	SQ.TUBE 40X40X3	3790	2
3	SQ.TUBE 40X40X2	1720	2
4	RECT.TUBE 80X40X3.2	1720	2
5	SQ.TUBE 40X40X2	493	10
6	FLAT 25X3	440	4
7	FLAT 25X3	493	2
8	FLAT 40X8	330	2
9	SQ.TUBE 40X40X2	102	4
10	SQ.TUBE 40X40X2	107	14
11	FLAT 40X3	70	14
12	SQ.TUBE 40X40X2	360	2
13	SQ.TUBE 40X40X2	340	2
14	SQ.TUBE 40X40X2	655	2
15	SQ.TUBE 40X40X2	200	4
16	SQ.TUBE 40X40X2	150	12
17	FLAT 40X5	40	2
18	ANGLE 65X65X5	160	2
19	ANGLE 90X75X5	110	2
20	ANGLE 50X65X5	40	2
21	ANGLE 40X40X3	125	2
22	PU SWIVEL WHEEL ASSY 1.5T CAP	105	2
23	ANGLE 25X25X3	40	8

NOTE:
 1.OPEN ENDS OF SQ.TUBE/ROUND TUBE TO BE PLUGGED, CHAMFERED.
 2.ENSURE FULL WELDING,WELDING SHOULD BE FREE FROM BLOW HOLES,WELDING SPATTERS ETC.
 3.ALL SHARP CORNERS,WELDING JOINTS TO BE DEBURRED.
 4.RAW METRIAL SHOULD BE OF UNIFORM THICKNESS & FINISH WITHOUT DENT MARKS.

Material:		This drawing and any information or descriptive material set out on it are the confidential and copyright property of HLPL . © and MUST NOT BE DISCLOSED, COPIED, LOANED in whole or part or used for any purpose without the written permission of HLPL .		Description: BASE FRAME	
Finish:		Unless Otherwise Stated: Linear Tol.: ±0.2, Angular Tol.: 0°15' Surface Finish: 0.8µm All Dimensions: mm		Drawn by: SHIVAM	
Drawing Scale: 1:20		Approx Weight: Kg		Checked/Approved by:	
PROJECTION TYPE: <input type="checkbox"/> FIRST ANGLE <input checked="" type="checkbox"/> THIRD ANGLE		Sheet Size: A2		Checked/Approved Date:	
Legal Owner:		Company Confidential		Part Name:	
holisol Supply Chain Management		Client Name:		Part No:	
OEM Name:		Sheet: 2 of 12		Revision:	

TOP FRAME

S.NO	DESCRIPTION	SIZE(MM)	QTY
1	SQ.TUBE 40X40X2	3870	2
2	RECT.TUBE 80X40X3.2	1800	2
3	RECT.TUBE 80X40X3.2	1800	2
4	SQ.TUBE 40X40X2	170	8
5	SQ.TUBE 40X40X2(GUSSET)	80	8
6	SQ.TUBE 40X40X2	100	4
7	SQ.TUBE 40X40X2	270	2
8	SQ.TUBE 40X40X2	250	2
9	SQ.TUBE 40X40X2	150	4
10	ANGLE 65X65X5	160	2
11	ANGLE 90X75X5	110	2
12	ANGLE 50X65X5	40	2
13	FLAT 40X5	40	2
14	SQ.TUBE 40X40X2	150	8
15	SQ.TUBE 40X40X2	655	2
16	ROD Ø6 MM	200	8

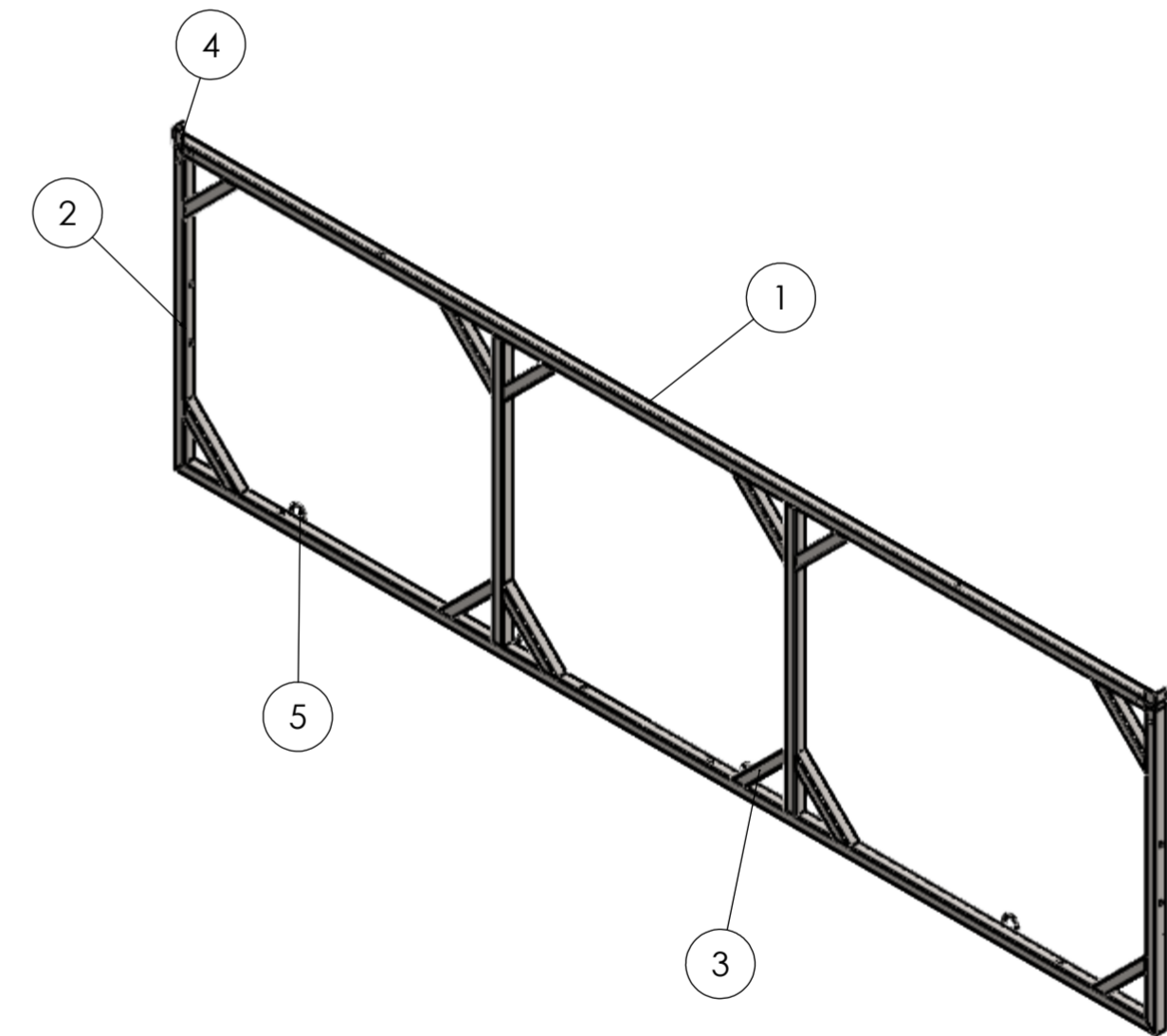
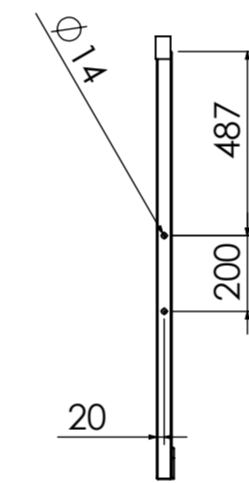
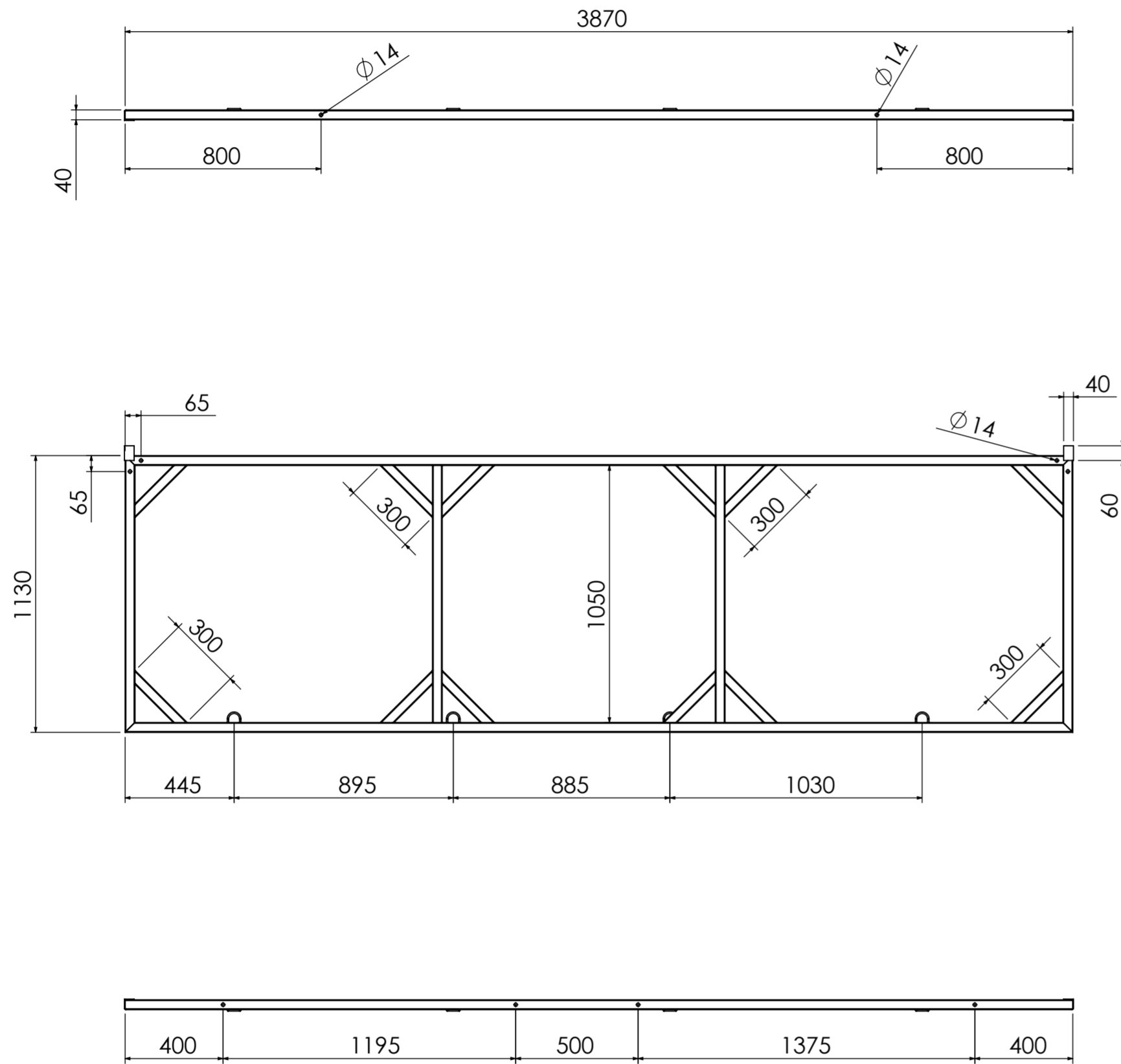


NOTE:
 1.OPEN ENDS OF SQ.TUBE/ROUND TUBE TO BE PLUGGED, CHAMFERED.
 2.ENSURE FULL WELDING,WELDING SHOULD BE FREE FROM BLOW HOLES,WELDING SPATTERS ETC.
 3.ALL SHARP CORNERS,WELDING JOINTS TO BE DEBURRED.
 4.RAW METRIAL SHOULD BE OF UNIFORM THICKNESS & FINISH WITHOUT DENT MARKS.

Material:		This drawing and any information or descriptive material set out on it are the confidential and copyright property of HLPL . © and MUST NOT BE DISCLOSED, COPIED, LOANED in whole or part or used for any purpose without the written permission of HLPL .		Description:	
Finish:		Unless Otherwise Stated: Linear Tol.: ±0.2, Angular Tol.: 0°15' Surface Finish: 0.8µm All Dimensions: mm		Drawn by:	
Drawing Scale: 1:20		Company Confidential		Checked/Approved by:	
Approx Weight: Kg		Legal Owner:		Part Name:	
PROJECTION TYPE: <input type="checkbox"/> FIRST ANGLE <input checked="" type="checkbox"/> THIRD ANGLE		Sheet Size: A2		Part No:	
		holisol Supply Chain Management		Client Name:	
				Sheet: 3 of 12	
				Revision:	

SIDE FRAME LEFT & RIGHT

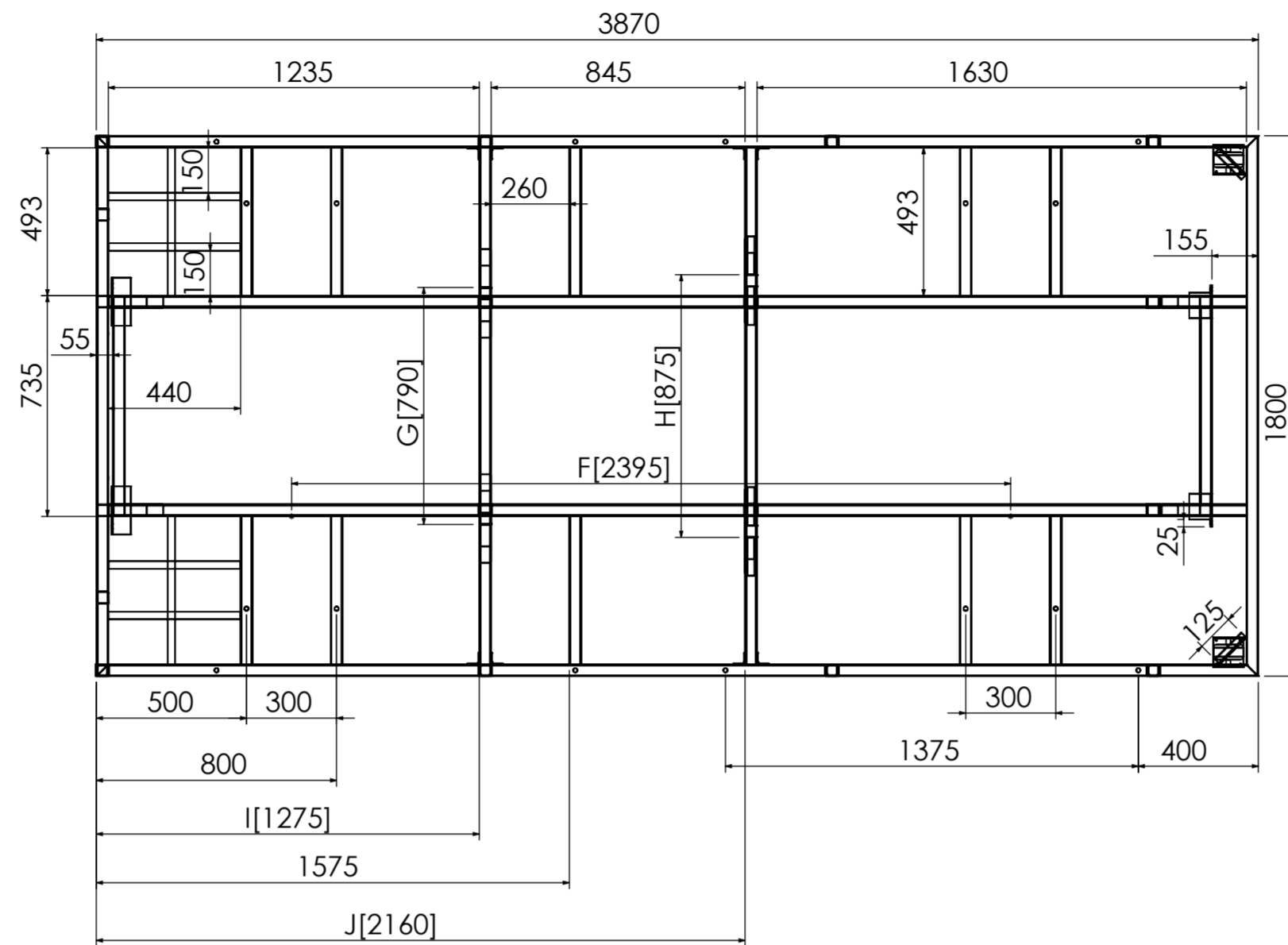
S.NO	DESCRIPTION	SIZE(MM)	QTY
1	SQ.TUBE 40X40X1.5	3870	4
2	SQ.TUBE 40X40X1.5	1050	8
3	SQ.TUBE 40X40X1.5	300	24
4	ANGLE 40X40X3	60	4
5	ROD Ø6 MM	200	8



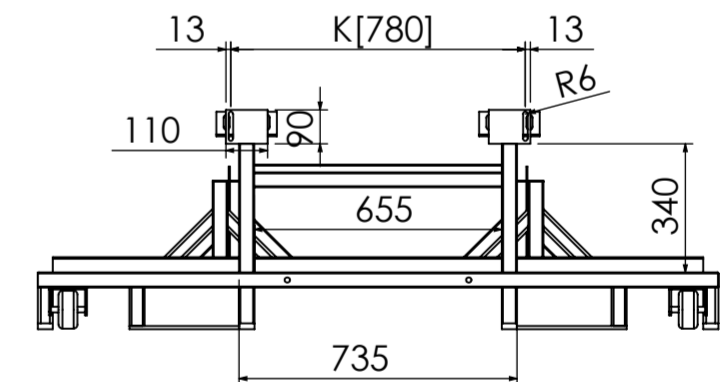
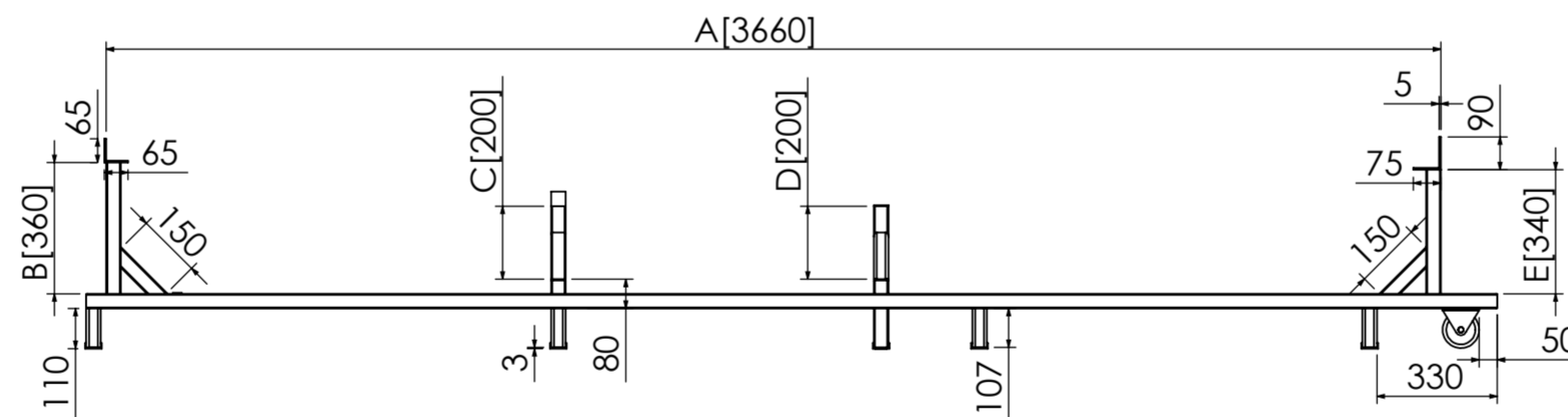
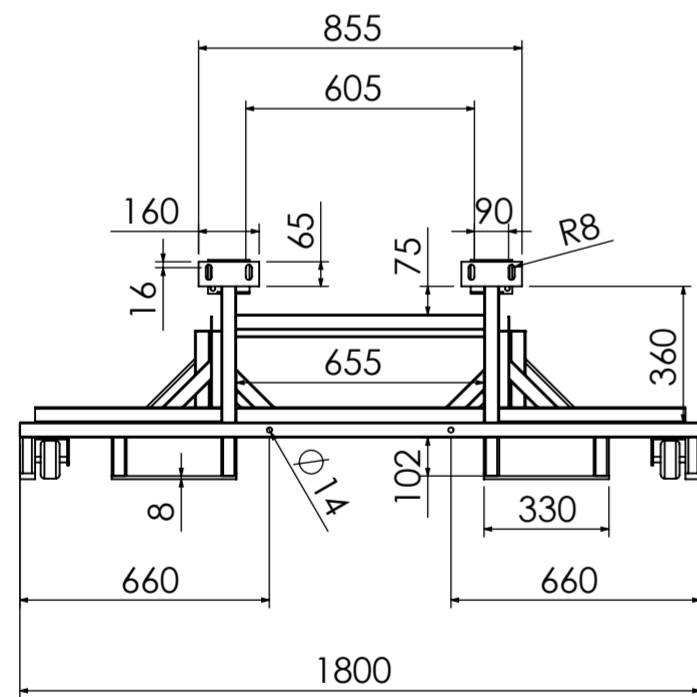
NOTE:
 1.OPEN ENDS OF SQ.TUBE/ROUND TUBE TO BE PLUGGED, CHAMFERED.
 2.ENSURE FULL WELDING,WELDING SHOULD BE FREE FROM BLOW HOLES,WELDING SPATTERS ETC.
 3.ALL SHARP CORNERS,WELDING JOINTS TO BE DEBURRED.
 4.RAW METRIAL SHOULD BE OF UNIFORM THICKNESS & FINISH WITHOUT DENT MARKS.

Material:	This drawing and any information or descriptive material set out on it are the confidential and copyright property of HLPL © and MUST NOT BE DISCLOSED, COPIED, LOANED in whole or part or used for any purpose without the written permission of HLPL .		Description: SIDE FRAME LEFT & RIGHT.	
Finish:	Unless Otherwise Stated: Linear Tol.: ±0.2, Angular Tol.: 0°15' Surface Finish: 0.8µm All Dimensions: mm		Drawn by: SHIVAM	Drawn Date: 05/04/2023
Drawing Scale: 1:20	Company Confidential		Checked/Approved by:	Checked/Approved Date:
Approx Weight: Kg	Legal Owner:	Part Name:		Part No:
PROJECTION TYPE: <input type="checkbox"/> FIRST ANGLE <input checked="" type="checkbox"/> THIRD ANGLE	Sheet Size: A2	holisol Supply Chain Management		Client Name:
		OEM Name: M&M	Sheet: 4 of 12	Revision:

BASE FRAME.



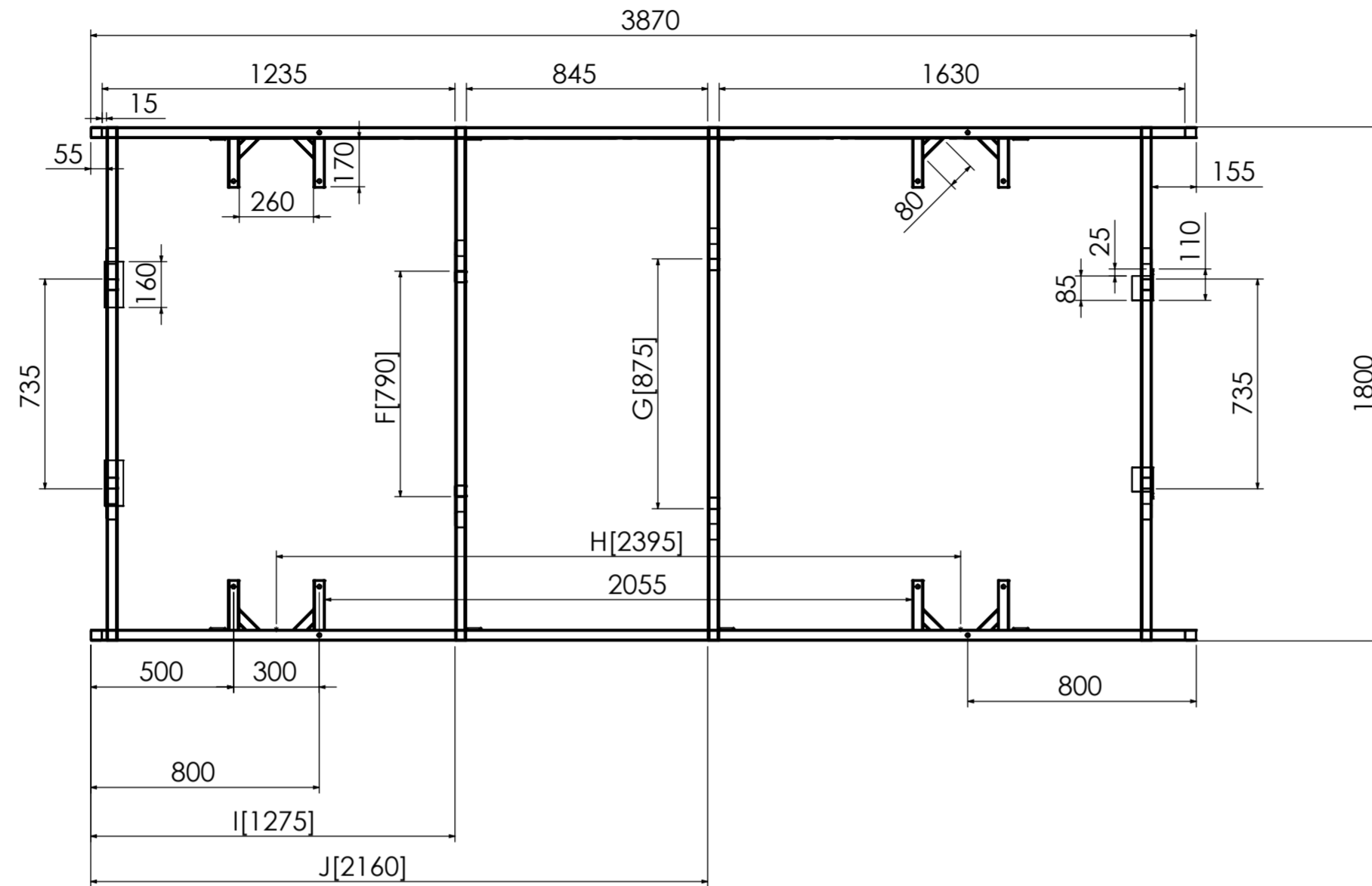
S.NO.	CRITICAL DIM.	ACTUAL
A	[3660]	
B	[360]	
C	[200]	
D	[200]	
E	[340]	
F	[2395]	
G	[790]	
H	[875]	
I	[1275]	
J	[2160]	
K	[780]	



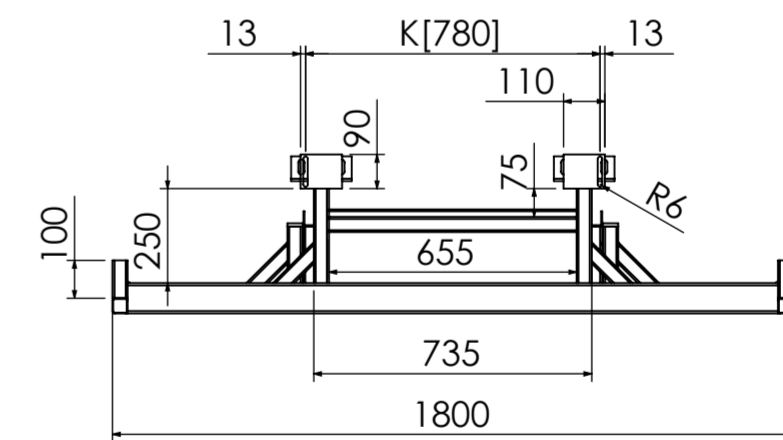
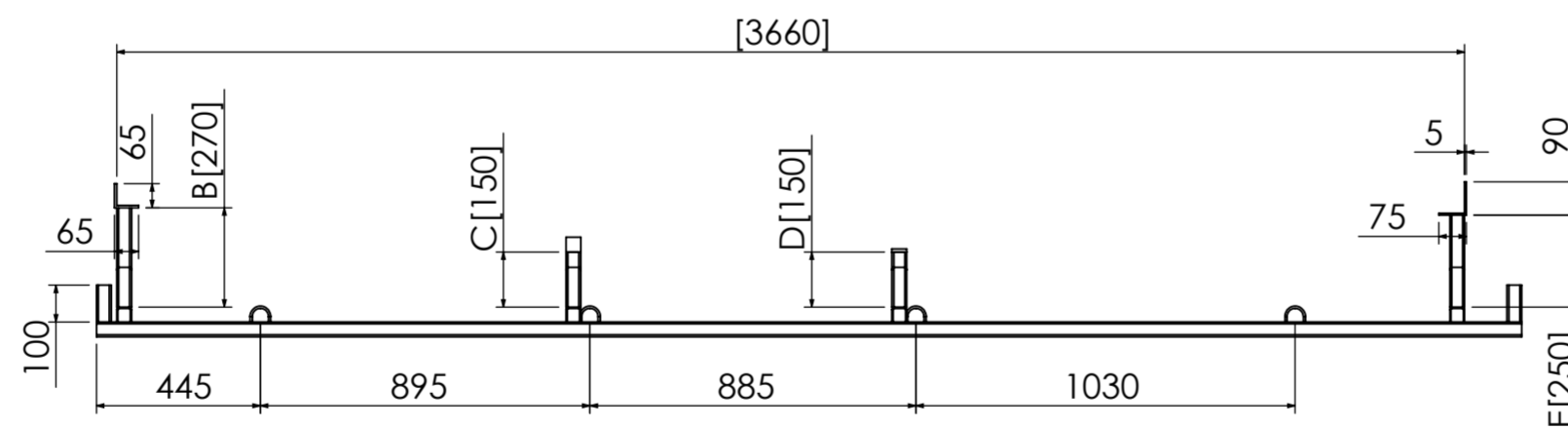
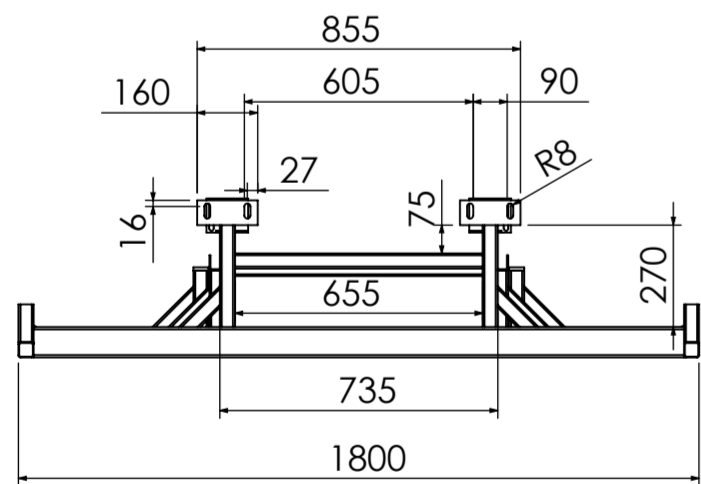
NOTE:
 1. OPEN ENDS OF SQ.TUBE/ROUND TUBE TO BE PLUGGED, CHAMFERED.
 2. ENSURE FULL WELDING, WELDING SHOULD BE FREE FROM BLOW HOLES, WELDING SPATTERS ETC.
 3. ALL SHARP CORNERS, WELDING JOINTS TO BE DEBURRED.
 4. RAW METRIAL SHOULD BE OF UNIFORM THICKNESS & FINISH WITHOUT DENT MARKS.

Material:	This drawing and any information or descriptive material set out on it are the confidential and copyright property of HLPL © and MUST NOT BE DISCLOSED, COPIED, LOANED in whole or part or used for any purpose without the written permission of HLPL .		Description: BASE FRAME.	
Finish:	Unless Otherwise Stated: Linear Tol.: ±0.2, Angular Tol.: 0°15' Surface Finish: 0.8µm All Dimensions: mm		Drawn by: SHIVAM	Drawn Date: 05/04/2023
Drawing Scale: 1:20	Company Confidential		Checked/Approved by:	Checked/Approved Date:
Approx Weight: Kg	Legal Owner:	Part Name:		Part No:
PROJECTION TYPE: <input type="checkbox"/> FIRST ANGLE <input checked="" type="checkbox"/> THIRD ANGLE	Sheet Size: A2			Client Name:
				OEM Name: M&M

TOP FRAME



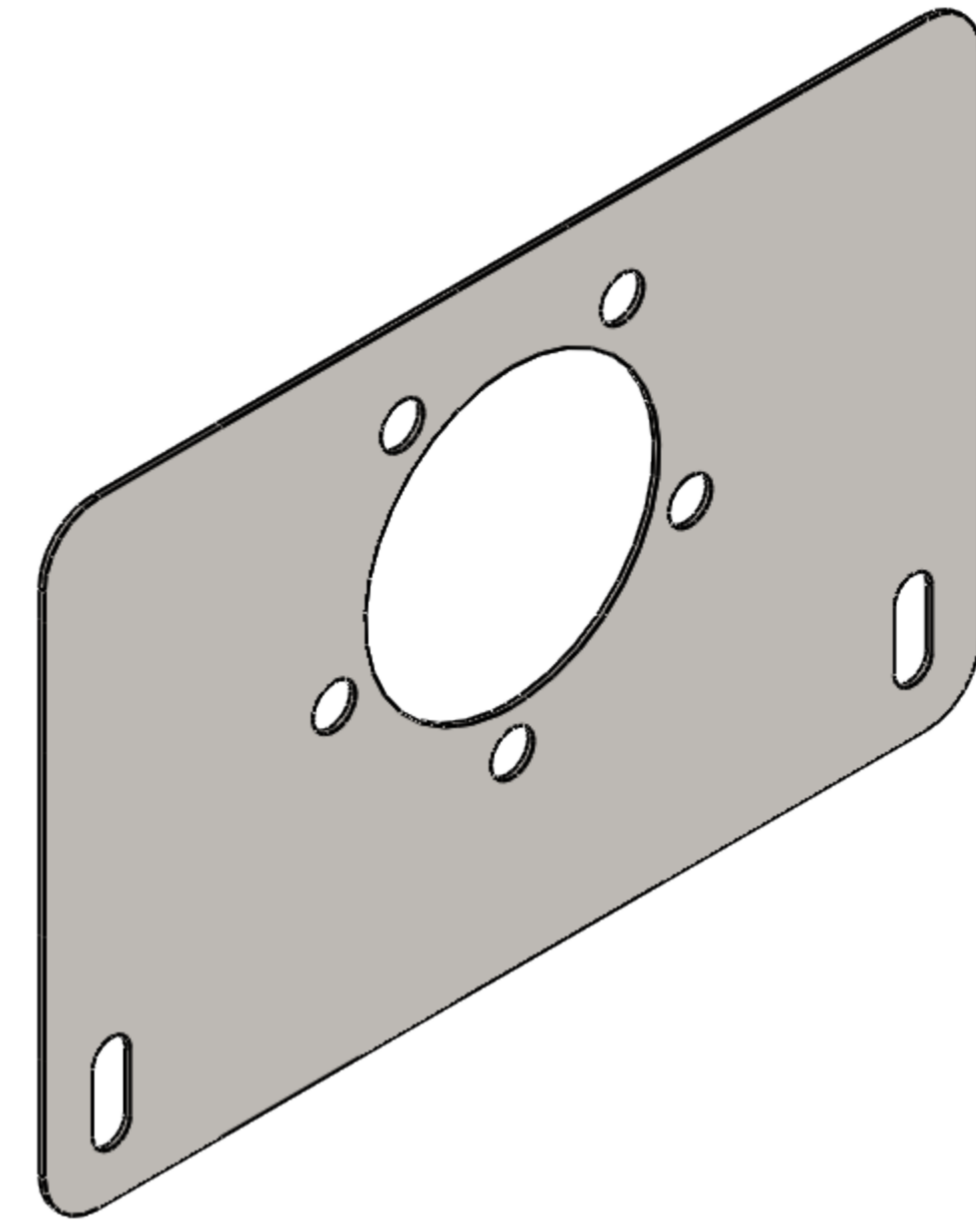
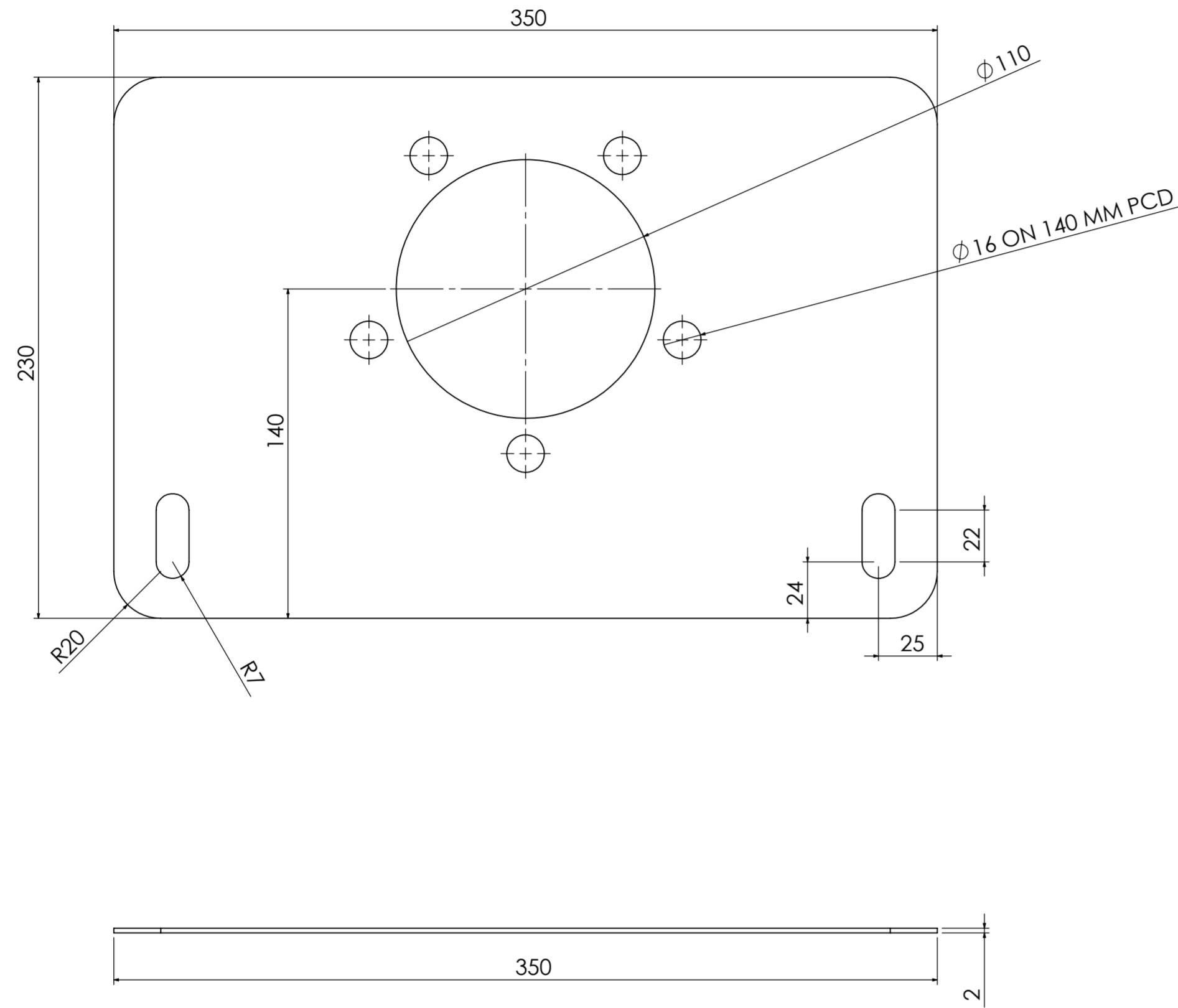
S.NO.	CRITICAL DIM.	ACTUAL
A	[3660]	
B	[270]	
C	[150]	
D	[150]	
E	[250]	
F	[790]	
G	[875]	
H	[2395]	
I	[1275]	
J	[2160]	
K	[780]	



NOTE:
 1.OPEN ENDS OF SQ.TUBE/ROUND TUBE TO BE PLUGGED, CHAMFERED.
 2.ENSURE FULL WELDING,WELDING SHOULD BE FREE FROM BLOW HOLES,WELDING SPATTERS ETC.
 3.ALL SHARP CORNERS,WELDING JOINTS TO BE DEBURRED.
 4.RAW METRIAL SHOULD BE OF UNIFORM THICKNESS & FINISH WITHOUT DENT MARKS.

Material:	This drawing and any information or descriptive material set out on it are the confidential and copyright property of HLPL © and MUST NOT BE DISCLOSED, COPIED, LOANED in whole or part or used for any purpose without the written permission of HLPL .		Description: TOP FRAME.	
Finish:	Unless Otherwise Stated: Linear Tol.: +0.2 , Angular Tol.: 0°15' Surface Finish: 0.8µm All Dimensions: mm		Drawn by: SHIVAM	Drawn Date: 05/04/2023
Drawing Scale: 1:20	Company Confidential		Checked/Approved by:	Checked/Approved Date:
Approx Weight: Kg	Legal Owner:	Part Name:		Part No:
PROJECTION TYPE: <input type="checkbox"/> FIRST ANGLE <input checked="" type="checkbox"/> THIRD ANGLE	Sheet Size: A2			Client Name:
		OEM Name: M&M	Sheet: 6 of 12	Revision:

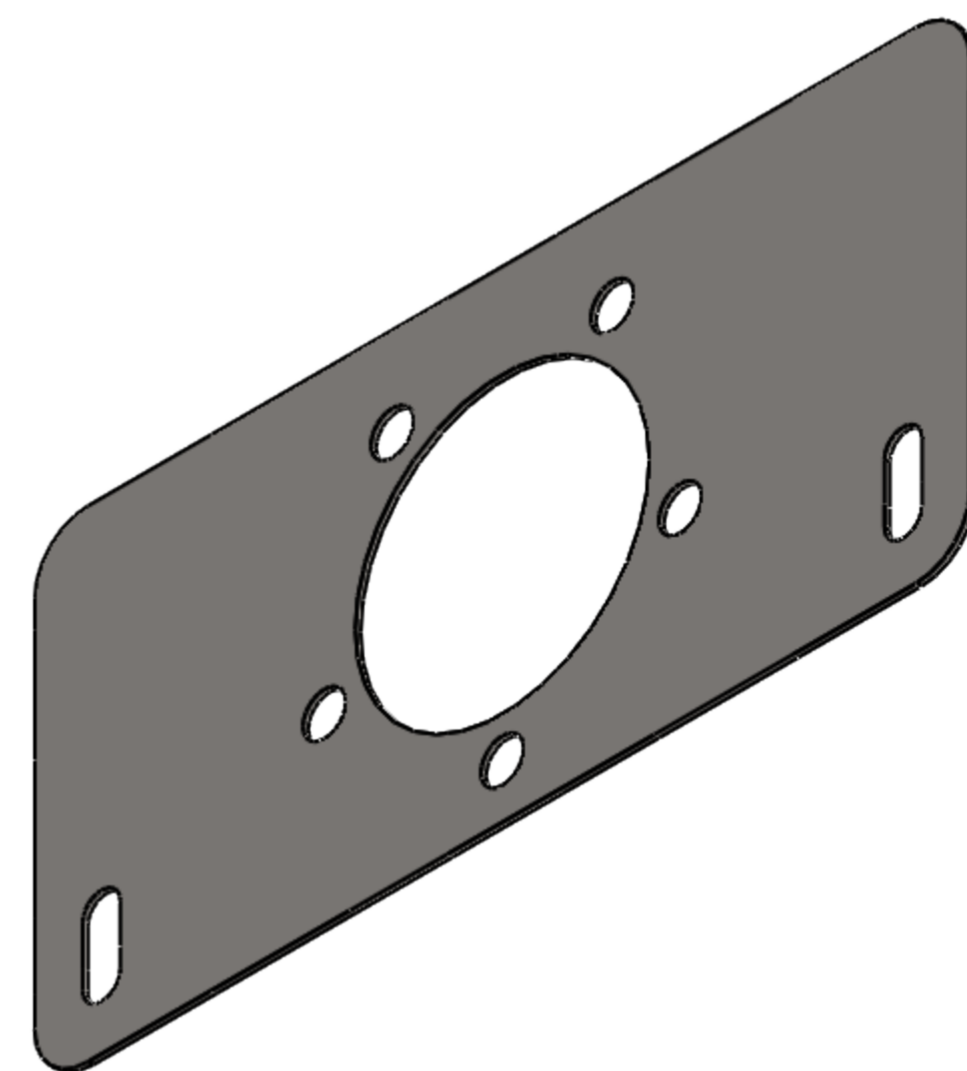
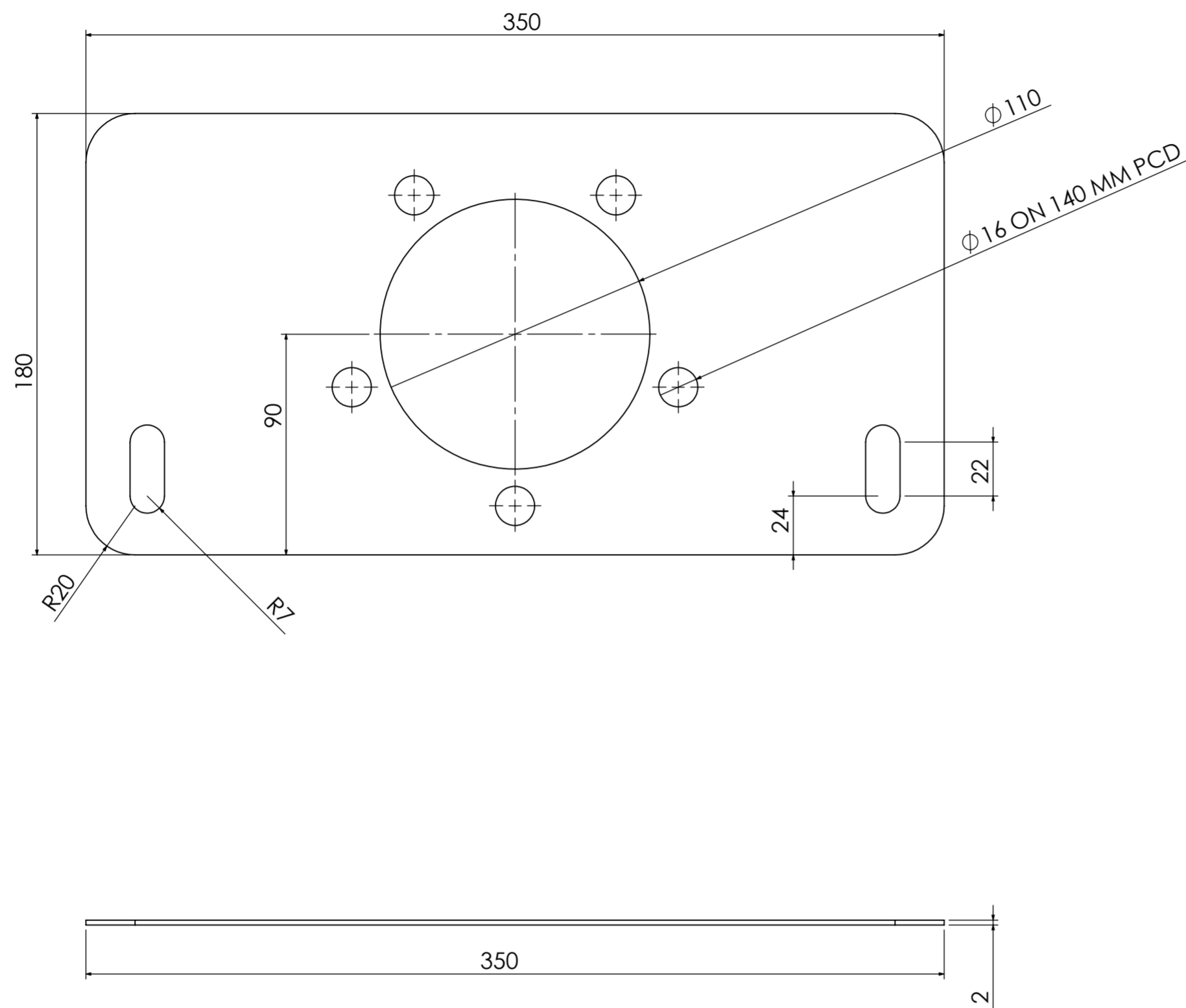
BOTTOM FLANGE



NOTE:
 1. OPEN ENDS OF SQ.TUBE/ROUND TUBE TO BE PLUGGED, CHAMFERED.
 2. ENSURE FULL WELDING, WELDING SHOULD BE FREE FROM BLOW HOLES, WELDING SPATTERS ETC.
 3. ALL SHARP CORNERS, WELDING JOINTS TO BE DEBURRED.
 4. RAW METRIAL SHOULD BE OF UNIFORM THICKNESS & FINISH WITHOUT DENT MARKS.

Material:		This drawing and any information or descriptive material set out on it are the confidential and copyright property of HLPL . © and MUST NOT BE DISCLOSED, COPIED, LOANED in whole or part or used for any purpose without the written permission of HLPL .		Description: BOTTOM FLANGE.	
Finish:		Unless Otherwise Stated: Linear Tol.: ±0.2, Angular Tol.: 0°15' Surface Finish: 0.8µm All Dimensions: mm		Drawn by: SHIVAM	
Drawing Scale: 1:2		Company Confidential		Checked/Approved by:	
Approx Weight: Kg		Legal Owner:		Part Name:	
PROJECTION TYPE: <input type="checkbox"/> FIRST ANGLE <input checked="" type="checkbox"/> THIRD ANGLE		Sheet Size: A2		Part No:	
		holisol Supply Chain Management		Client Name:	
				Sheet: 7 of 12	
				Revision:	
				OEM Name: M&M	

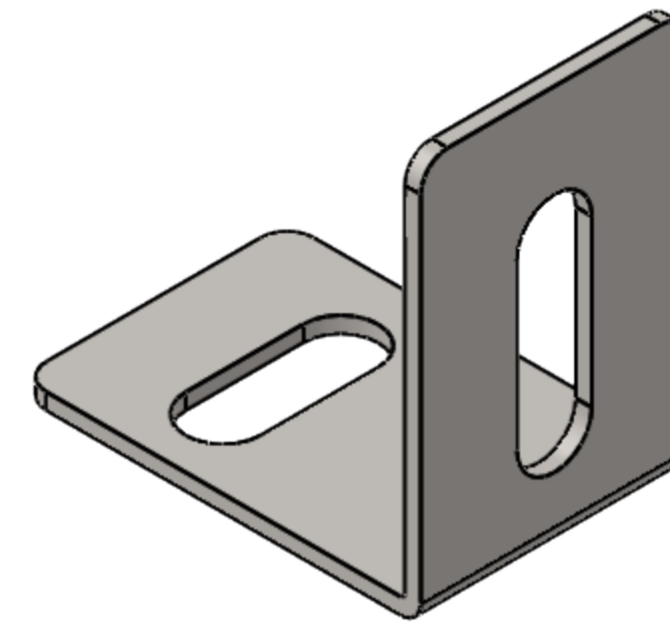
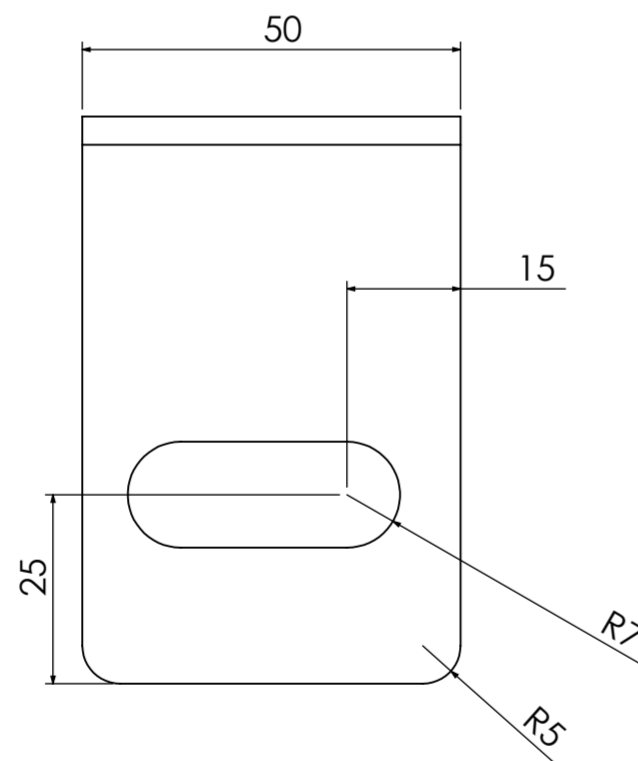
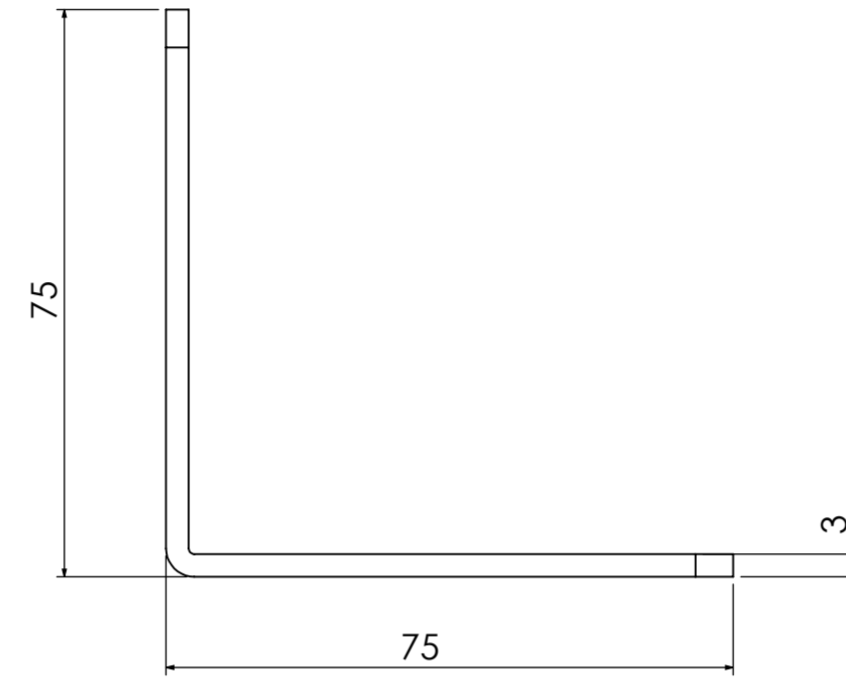
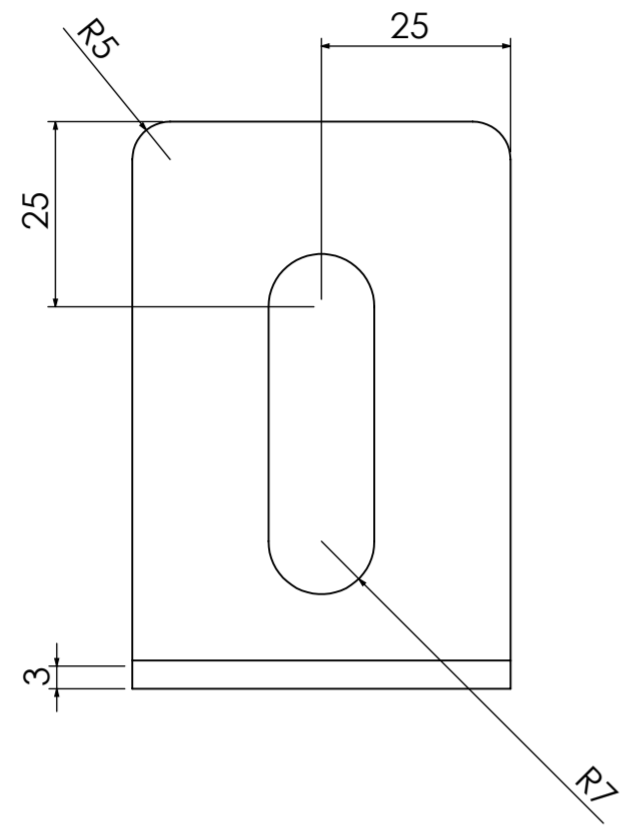
TOP FLANGE



NOTE:
 1. OPEN ENDS OF SQ. TUBE/ROUND TUBE TO BE PLUGGED, CHAMFERED.
 2. ENSURE FULL WELDING, WELDING SHOULD BE FREE FROM BLOW HOLES, WELDING SPATTERS ETC.
 3. ALL SHARP CORNERS, WELDING JOINTS TO BE DEBURRED.
 4. RAW METRIAL SHOULD BE OF UNIFORM THICKNESS & FINISH WITHOUT DENT MARKS.

Material:		This drawing and any information or descriptive material set out on it are the confidential and copyright property of HLPL . © and MUST NOT BE DISCLOSED, COPIED, LOANED in whole or part or used for any purpose without the written permission of HLPL .		Description: TOP FLANGE	
Finish:		Unless Otherwise Stated: Linear Tol.: ± 0.2 , Angular Tol.: $0^{\circ}15'$ Surface Finish: $0.8\mu m$ All Dimensions: mm		Drawn by: SHIVAM	
Drawing Scale: 1:2		Company Confidential		Checked/Approved by:	
Approx Weight: Kg		Legal Owner:		Part Name:	
PROJECTION TYPE: <input type="checkbox"/> FIRST ANGLE <input checked="" type="checkbox"/> THIRD ANGLE		Sheet Size: A2		Part No:	
		holisol Supply Chain Management		Client Name:	
		OEM Name: M&M		Sheet: 8 of 12	
				Revision:	

BRACKET

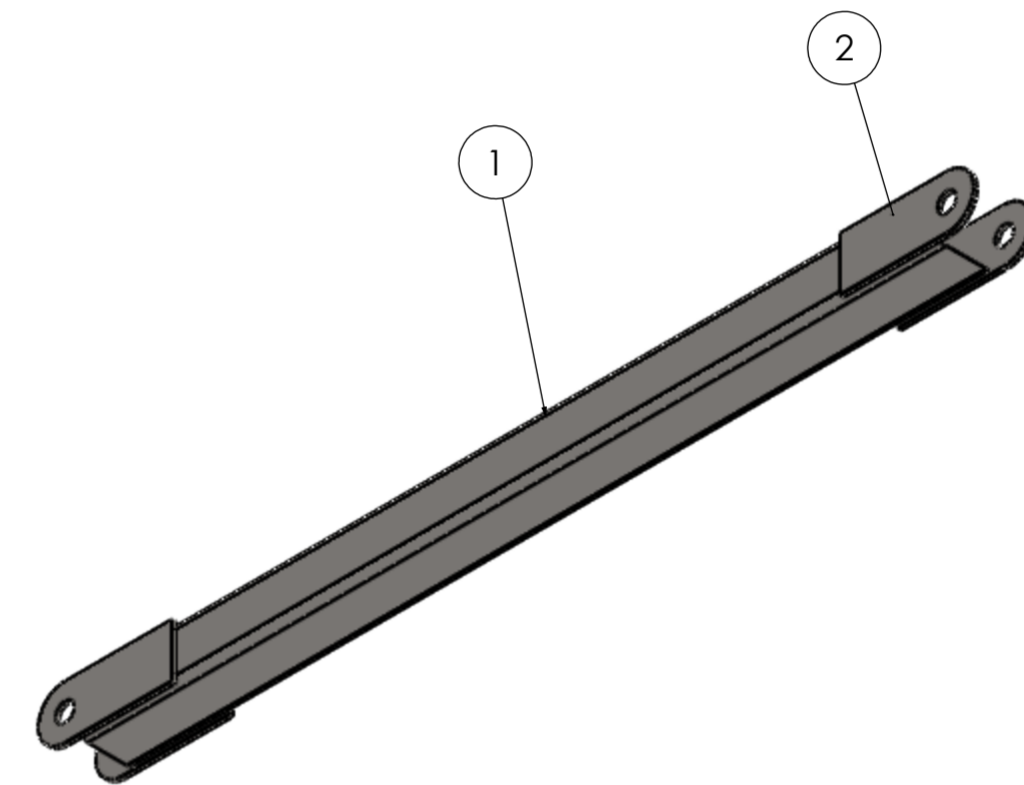
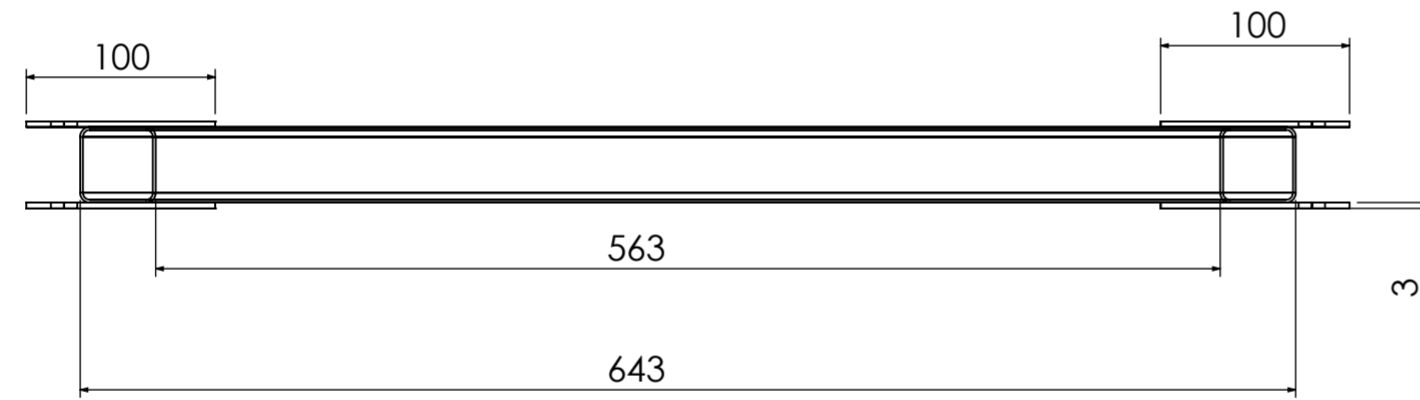
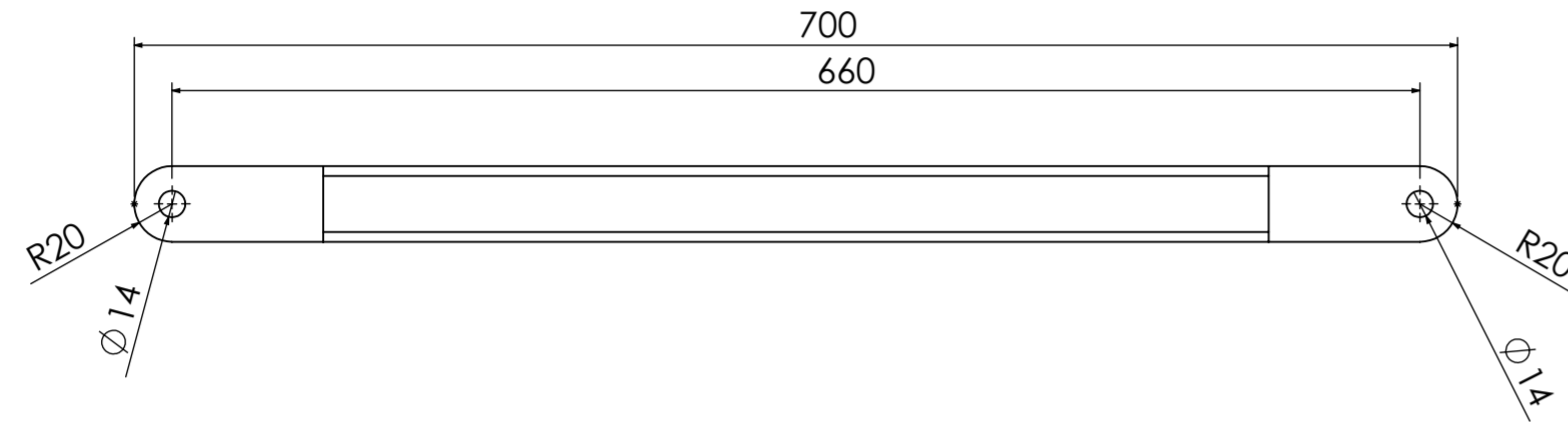


NOTE:
 1.OPEN ENDS OF SQ.TUBE/ROUND TUBE TO BE PLUGGED, CHAMFERED.
 2.ENSURE FULL WELDING,WELDING SHOULD BE FREE FROM BLOW HOLES,WELDING SPATTERS ETC.
 3.ALL SHARP CORNERS,WELDING JOINTS TO BE DEBURRED.
 4.RAW METRIAL SHOULD BE OF UNIFORM THICKNESS & FINISH WITHOUT DENT MARKS.

Material:		This drawing and any information or descriptive material set out on it are the confidential and copyright property of HLPL . © and MUST NOT BE DISCLOSED, COPIED, LOANED in whole or part or used for any purpose without the written permission of HLPL .		Description: BRACKET	
Finish:		Unless Otherwise Stated: Linear Tol.: +0.2 , Angular Tol.: 0°15' Surface Finish: 0.8µm All Dimensions: mm		Drawn by: SHIVAM	
Drawing Scale: 1:1		Company Confidential		Checked/Approved by:	
Approx Weight: Kg		Legal Owner: holisol Supply Chain Management		Checked/Approved Date:	
PROJECTION TYPE: <input type="checkbox"/> FIRST ANGLE <input checked="" type="checkbox"/> THIRD ANGLE		Sheet Size: A2		Part Name:	
				Part No:	
				Client Name:	
				Sheet: 9 of 12	
				Revision:	
				OEM Name: M&M	

GUSSET 1

S.NO.	DESCRIPTION	SIZE(MM)	QTY
1	SQ.TUBE 40X40X1.5	643	4
2	FLAT 40X3	100	16

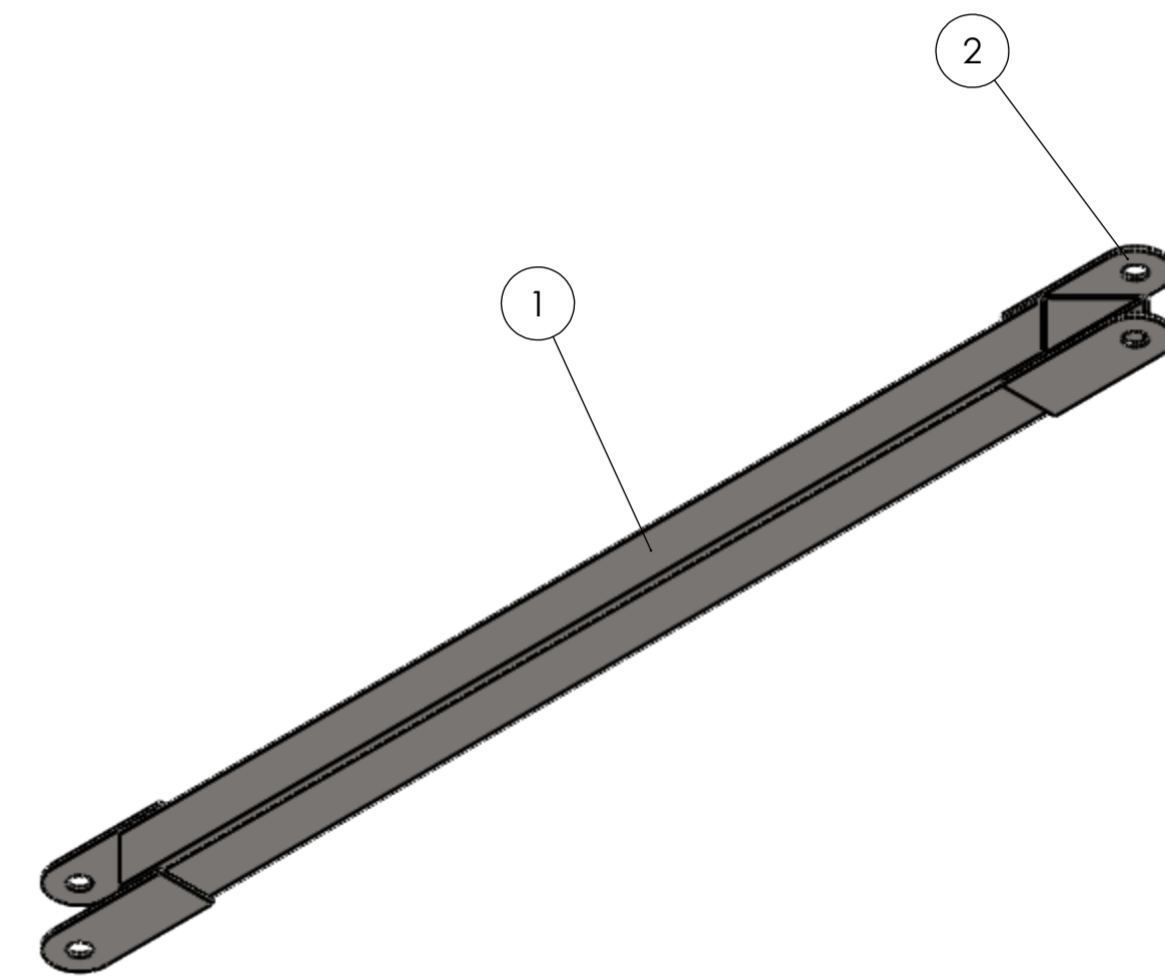
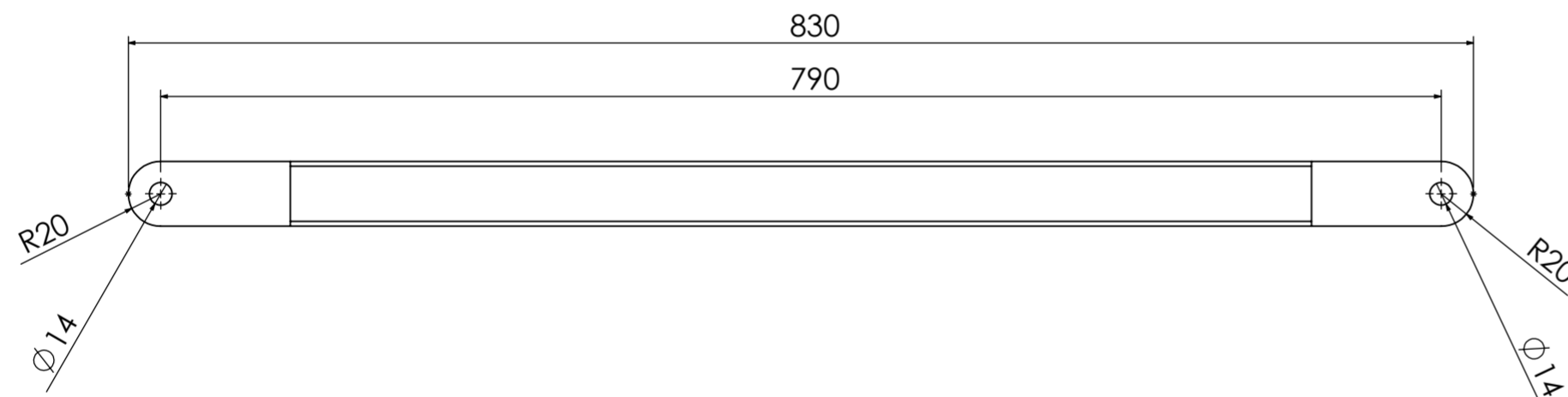
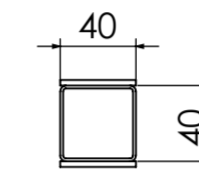
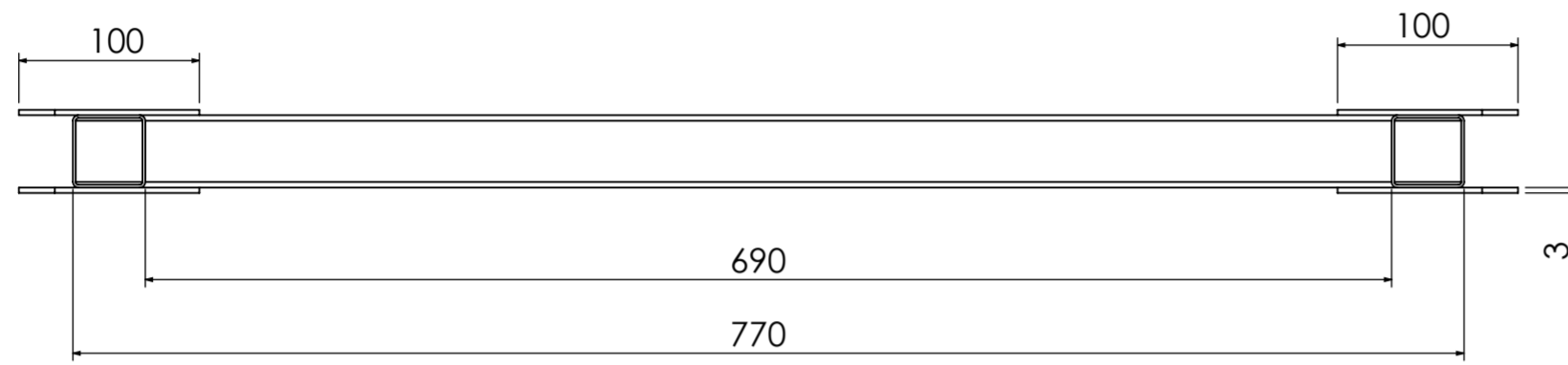


NOTE:
 1.OPEN ENDS OF SQ.TUBE/ROUND TUBE TO BE PLUGGED, CHAMFERED.
 2.ENSURE FULL WELDING,WELDING SHOULD BE FREE FROM BLOW HOLES,WELDING SPATTERS ETC.
 3.ALL SHARP CORNERS,WELDING JOINTS TO BE DEBURRED.
 4.RAW METRIAL SHOULD BE OF UNIFORM THICKNESS & FINISH WITHOUT DENT MARKS.

Material:	This drawing and any information or descriptive material set out on it are the confidential and copyright property of HLPL . © and MUST NOT BE DISCLOSED, COPIED, LOANED in whole or part or used for any purpose without the written permission of HLPL .		Description: GUSSET 1	
Finish:	Unless Otherwise Stated: Linear Tol.: +0.2 , Angular Tol.: 0°15' Surface Finish: 0.8µm All Dimensions: mm		Drawn by: SHIVAM	Drawn Date: 05/04/2023
Drawing Scale:	1:5		Company Confidential	
Approx Weight: Kg	Legal Owner:	Part Name:		Part No:
PROJECTION TYPE: <input type="checkbox"/> FIRST ANGLE <input checked="" type="checkbox"/> THIRD ANGLE	Sheet Size: A2	holisol Supply Chain Management		Client Name:
		OEM Name: M&M	Sheet: 10 of 12	Revision:

GUSSET 2

S.NO.	DESCRIPTION	SIZE(MM)	QTY
1	SQ.TUBE 40X40X1.5	770	4
2	FLAT 40X3	100	16



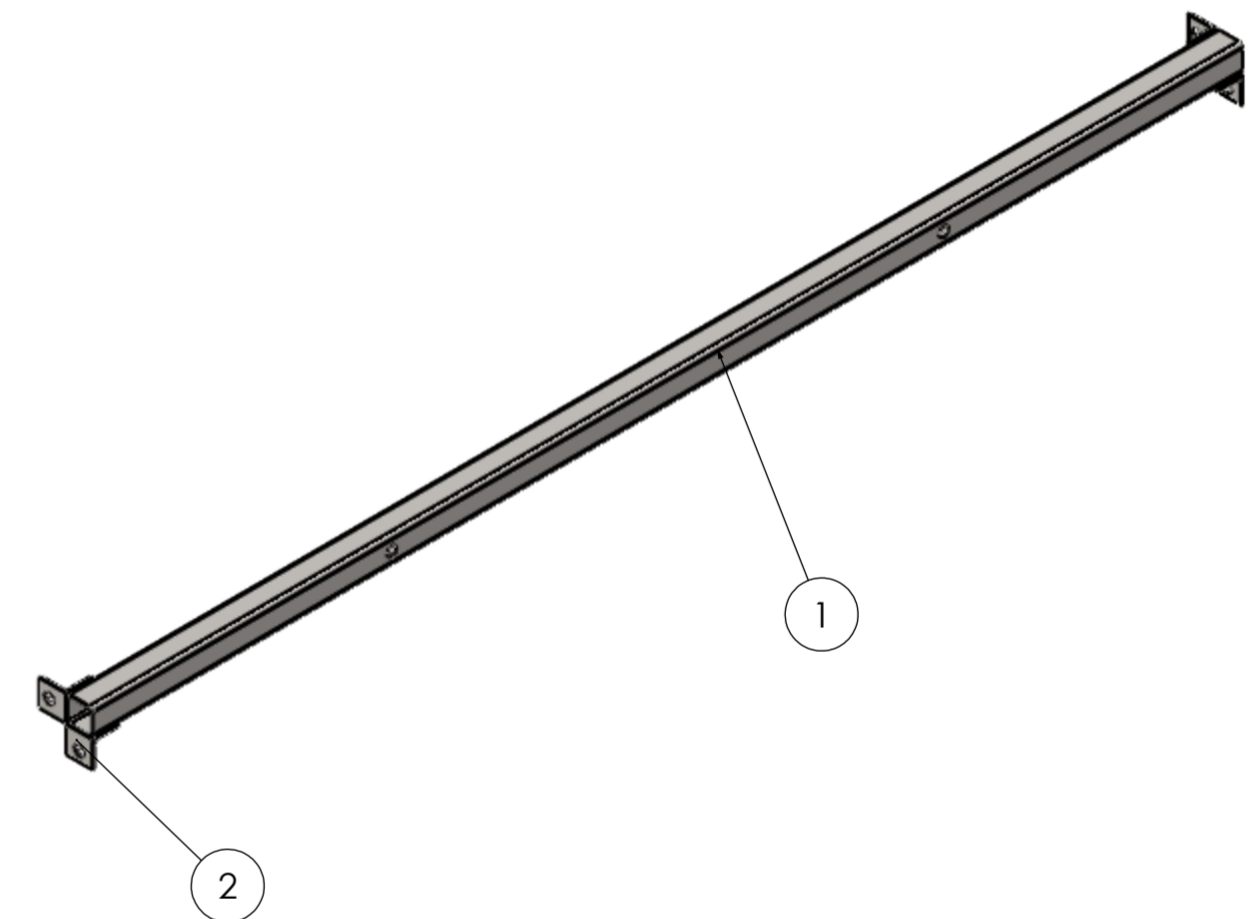
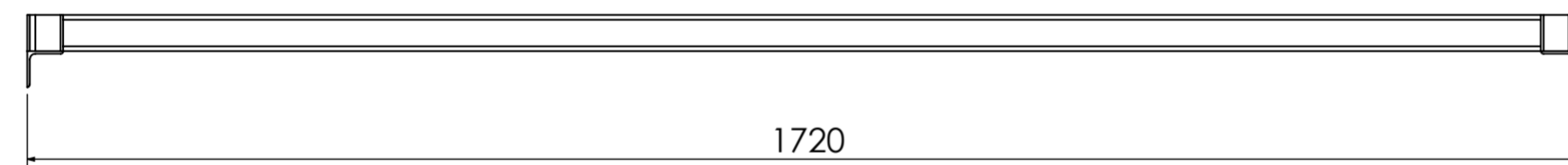
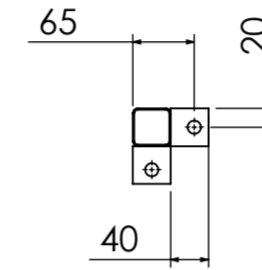
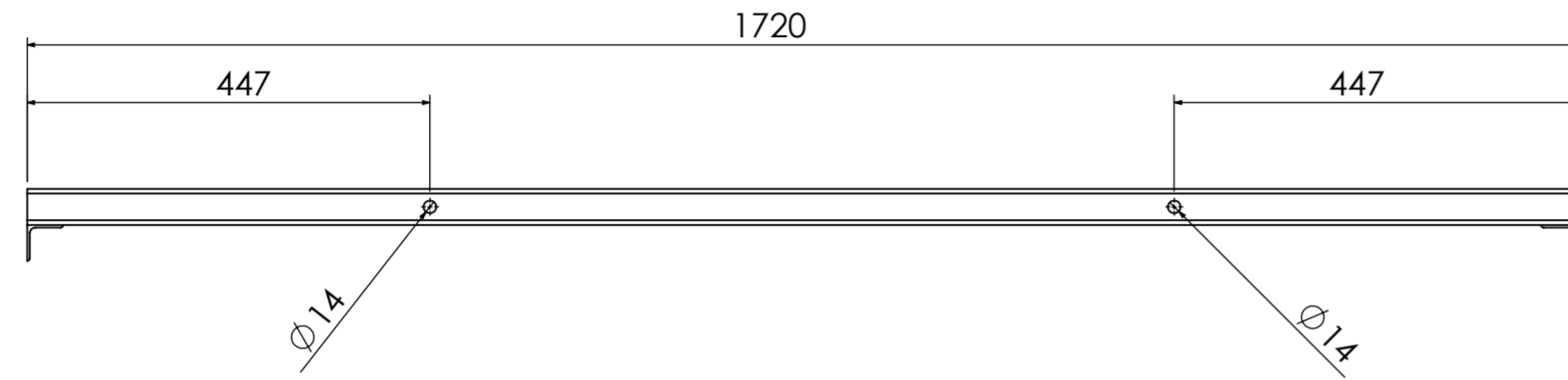
NOTE:
 1.OPEN ENDS OF SQ.TUBE/ROUND TUBE TO BE PLUGGED, CHAMFERED.
 2.ENSURE FULL WELDING,WELDING SHOULD BE FREE FROM BLOW HOLES,WELDING SPATTERS ETC.
 3.ALL SHARP CORNERS,WELDING JOINTS TO BE DEBURRED.
 4.RAW METRIAL SHOULD BE OF UNIFORM THICKNESS & FINISH WITHOUT DENT MARKS.

Material:	This drawing and any information or descriptive material set out on it are the confidential and copyright property of HLPL . © and MUST NOT BE DISCLOSED, COPIED, LOANED in whole or part or used for any purpose without the written permission of HLPL .		Description: GUSSET 2	
Finish:	Unless Otherwise Stated: Linear Tol.: +0.2 , Angular Tol.: 0°15' Surface Finish: 0.8µm All Dimensions: mm		Drawn by: SHIVAM	Drawn Date: 05/04/2023
Drawing Scale:	1:5		Company Confidential	
Approx Weight: Kg	Legal Owner:	Part Name:		Part No:
PROJECTION TYPE: <input type="checkbox"/> FIRST ANGLE <input checked="" type="checkbox"/> THIRD ANGLE	Sheet Size: A2	Client Name:		Sheet: 11 of 12
		OEM Name: M&M		Revision:



SIDE SUPPORT BAR

S.NO.	DESCRIPTION	SIZE(MM)	QTY
1	SQ.TUBE 40X40X1.5	1720	2
2	ANGLE 40X40X3	40	8



NOTE:
 1. OPEN ENDS OF SQ.TUBE/ROUND TUBE TO BE PLUGGED, CHAMFERED.
 2. ENSURE FULL WELDING, WELDING SHOULD BE FREE FROM BLOW HOLES, WELDING SPATTERS ETC.
 3. ALL SHARP CORNERS, WELDING JOINTS TO BE DEBURRED.
 4. RAW METRIAL SHOULD BE OF UNIFORM THICKNESS & FINISH WITHOUT DENT MARKS.

Material:	This drawing and any information or descriptive material set out on it are the confidential and copyright property of HLPL . © and MUST NOT BE DISCLOSED, COPIED, LOANED in whole or part or used for any purpose without the written permission of HLPL .		Description: SIDE SUPPORT BAR	
Finish:	Unless Otherwise Stated: Linear Tol.: ± 0.2 , Angular Tol.: $0^{\circ}15'$ Surface Finish: $0.8\mu m$ All Dimensions: mm		Drawn by: SHIVAM	Drawn Date: 05/04/2023
Drawing Scale: 1:10	Company Confidential		Checked/Approved by:	Checked/Approved Date:
Approx Weight: Kg	Legal Owner:	Part Name:		Part No:
PROJECTION TYPE: <input type="checkbox"/> FIRST ANGLE <input checked="" type="checkbox"/> THIRD ANGLE	Sheet Size: A2	holisol Supply Chain Management		Client Name:
		OEM Name: M&M	Sheet: 12 of 12	Revision: